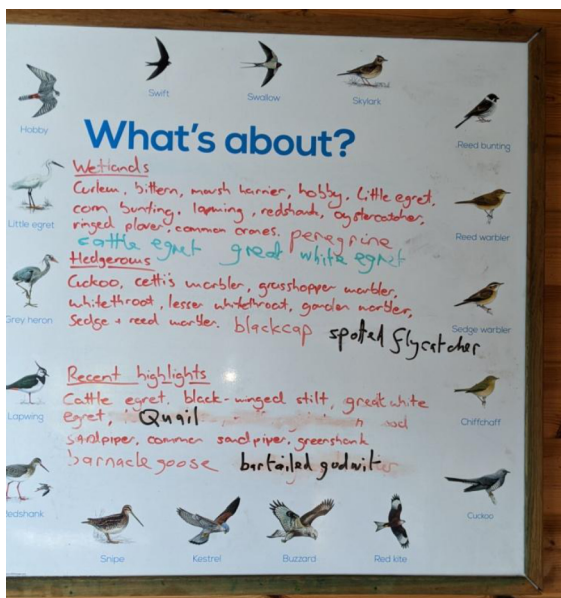


4.3 Unusually high concentration of wildlife

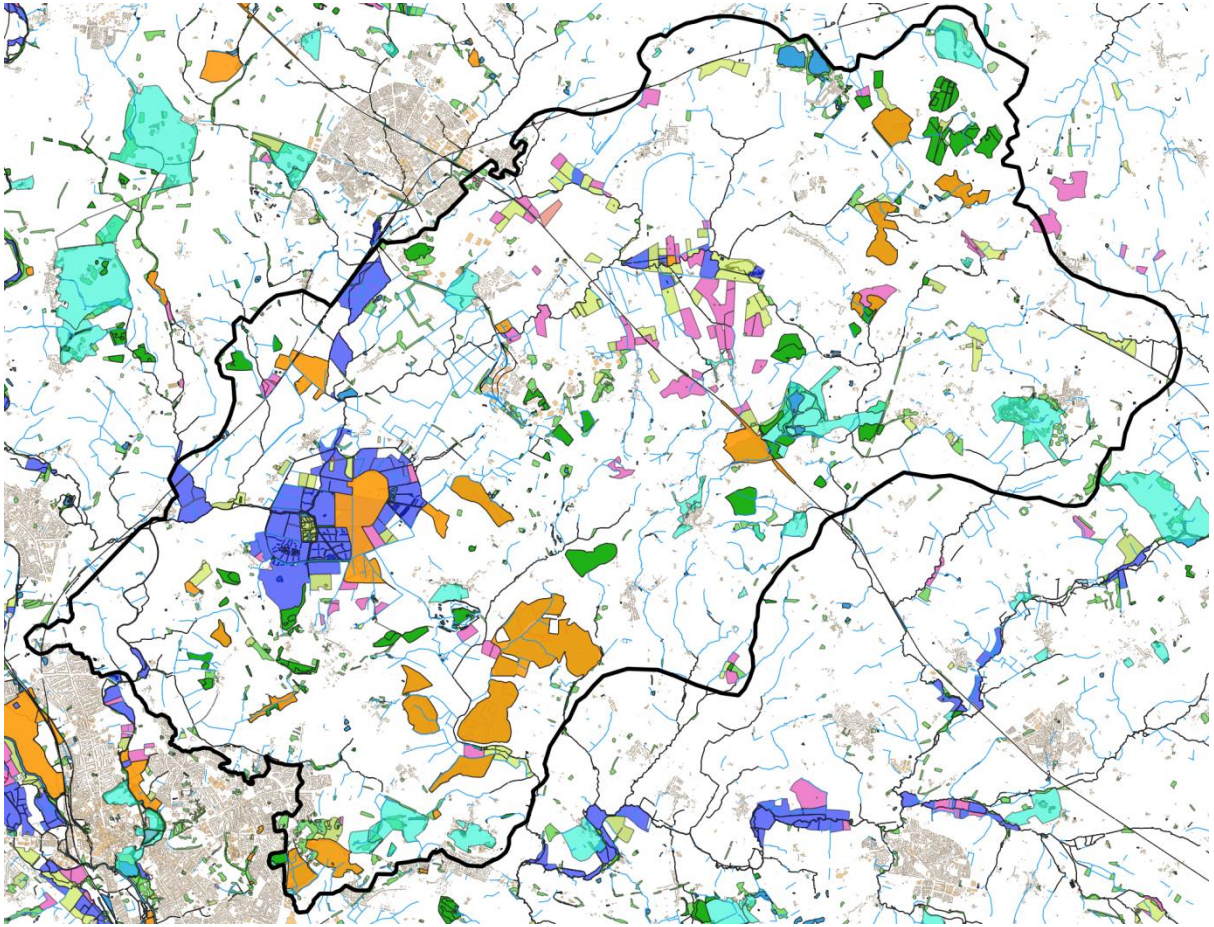


Cranes at the RSPB Otmoor reserve

The wildlife value of the proposed RNP is very high, and no other part of Oxfordshire has such a high hectareage of designated sites (SSSIs and Local wildlife sites), irreplaceable habitats (ancient woodlands and plantations on former ancient woodland), priority habitats (oak woodland, wetland, acid grassland, calcareous grassland, and lowland meadows) and priority species (including rare butterflies and bats) and nature reserves. English Nature, in the 1990s, declared the area a regional biodiversity hotspot.



Sightings board from RSPB Otmoor



Sites of special scientific interest (SSSIs) shown in Orange